

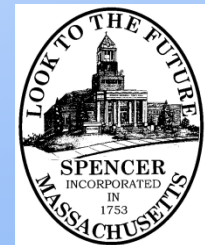


Moving Together Conference PowerPoint Template

Steven J. Tyler, P.E.
Town of Spencer



massDOT
Massachusetts Department of Transportation



Spencer Complete Streets Policy Development

- Policy Development began in the Summer of 2015
- Core Team:
 - Adam Gaudette –Town Administrator
 - Steven Tyler – Highway / DPW Superintendent
 - Eben Butler – Highway Foreman
 - Dan Daniska – CMRPC Transportation
 - Eric Smith – CMRPC Land Use



Spencer Complete Streets Policy Development

Lessons Learned

Develop of CS Policy that works best for your community.

A higher CS Policy score does not necessarily mean a better CS Policy for your community.

Create a CS Policy that your community can manage and implement easily and is consistent with existing and long-term goals and objectives.

Previous planning and coordination with other boards and the public greatly reduced challenges of implementing CS policy.



Complete Streets Policy Elements

1. **Vision & Goals** – Revitalize and beautify downtown at the same time as making it more safe, healthy and accessible for all users.
2. **Users and Modes** – All users to the greatest extent practicable with an emphasis on pedestrians of all abilities as well as access to public places, schools and businesses.
3. **Projects and Phases** – As a matter of routine during all *design, construction, maintenance*.
4. **Exceptions** – *Where limited by physical, ROW and economic barriers.*
5. **Network** – Maintain an comprehensive inventory and identify priorities on gaps.
6. **Jurisdiction** - All public and private projects.
7. **Context Sensitivity** – *One size does not fit all*
8. **Design Guidance** – *Committing to best practices such as MassDOT design guidance, MAAB, AASHTO, CMRPC and other recognized resources.*
9. **Performance Measures** - *Evaluation and regular reported but not mandatory detailed reports.*
10. **Implementation** – Routine part of everyday operations; include in planning/zoning bylaws, codes, guidelines and master planning; committed to training staff; inventory; and reporting.



Spencer Complete Streets Tier II Prioritization Plan Timeline

- **Tier II Agreement with CMRPC in June 2016**
- **Field Data Collection in July 2016**
- **Extensive Sidewalk Condition Collection & Digitization in GIS**
- **Community Outreach Meeting / Board of Selectmen Presentation: Late August 2016**
- **Plan will be Finalized in Early October 2016 and will include additional outreach meeting(s)**

Data Collection

Conditions



Obstructions



Evaluation Criteria & Prioritization

Evaluation Criteria

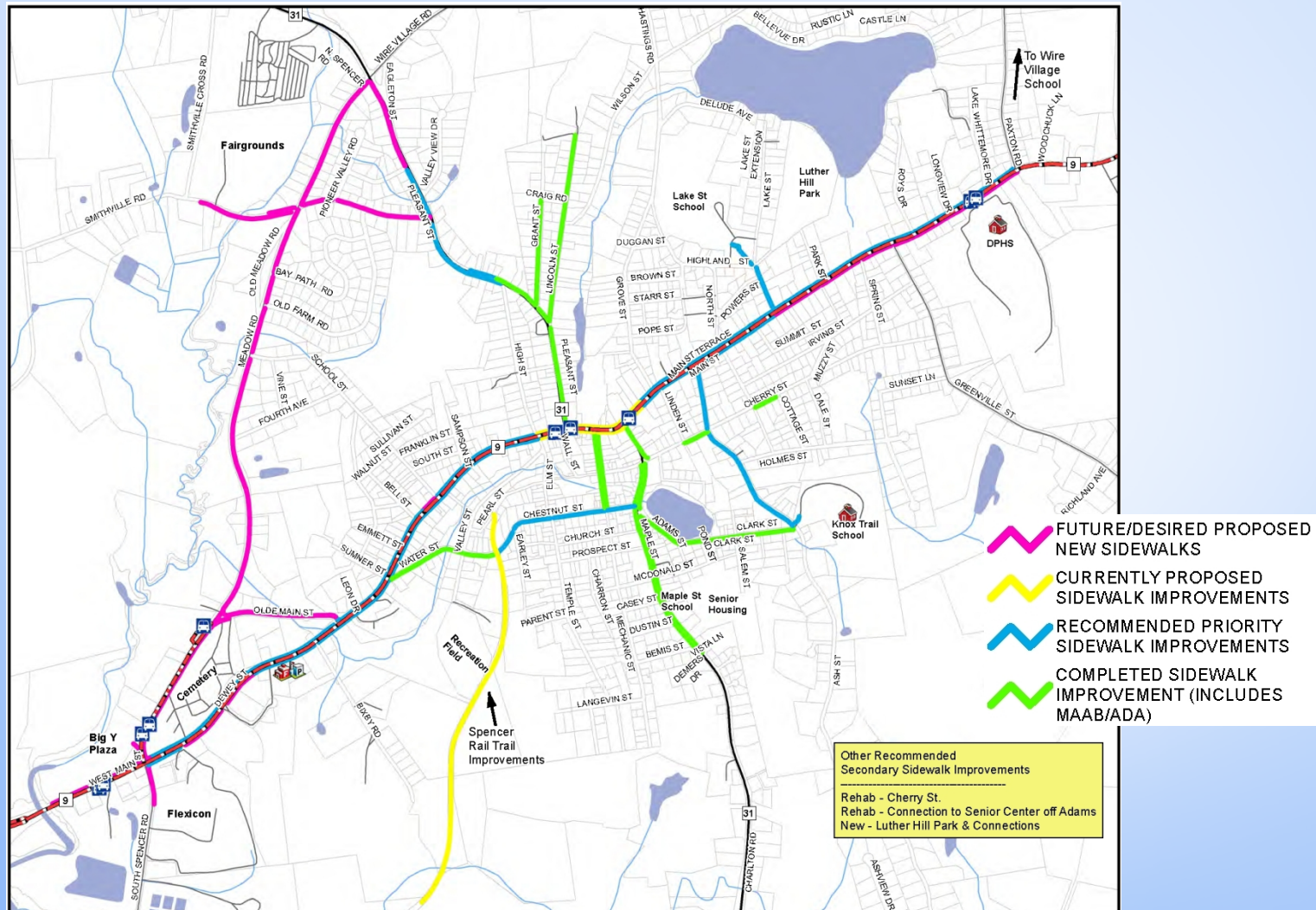
- Urban vs. Rural Areas
- Mobility (Bike/Ped)
- Transit Operations
- Compatibility with Local or Regional Goals
- Public or Stakeholder support
- Project Schedule & Cost Estimates

Projects will be grouped into targeted geographies (Town Center, Schools, etc.)



Downtown, Urban & Rural Settings





Moving
Together



16

Prioritization Plan built upon the Town's 2013 "Sidewalk Improvement Plan" emphasizing urban area connections between public building, schools & recreational resources.

2016 MOVING TOGETHER CONFERENCE

Completed Projects

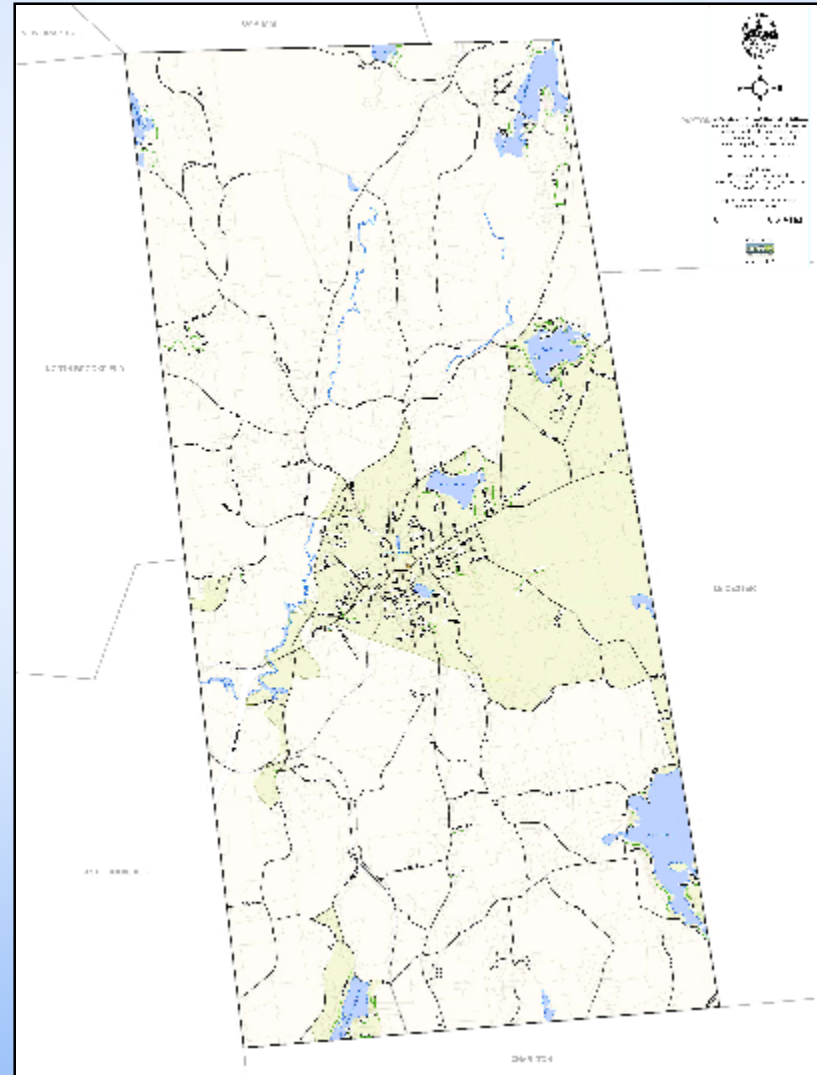


Completed Projects



Experience & Thoughts to Date

- CS Prioritization & Needs will vary based upon changes in community character.
- Urban areas may be treated differently than rural areas.
- Priorities must address restoration and improvement to existing CS facilities as well as expanding to create new.
- Plan for the Future.



Contact Information

- **Steven J. Tyler, P.E., Town of Spencer**
styler@spencerma.gov

(508) 885-7525

- **Dan Daniska, CMRPC**
ddaniska@cmrpc.org

(508) 459-3331