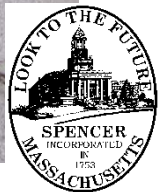


# Meadow Road Reconstruction & Intermodal Enhancements

**Submitted By:**  
**Town of Spencer**  
**Board of Selectmen**





# Meadow Road Reconstruction & Intermodal Improvements

## Existing Pavement Conditions



2017 01 21 Meadow Rd 006



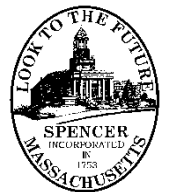
2017 01 22 Meadow Rd 005



2017 01 22 Meadow Rd 006



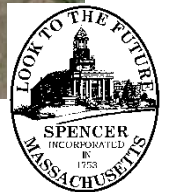
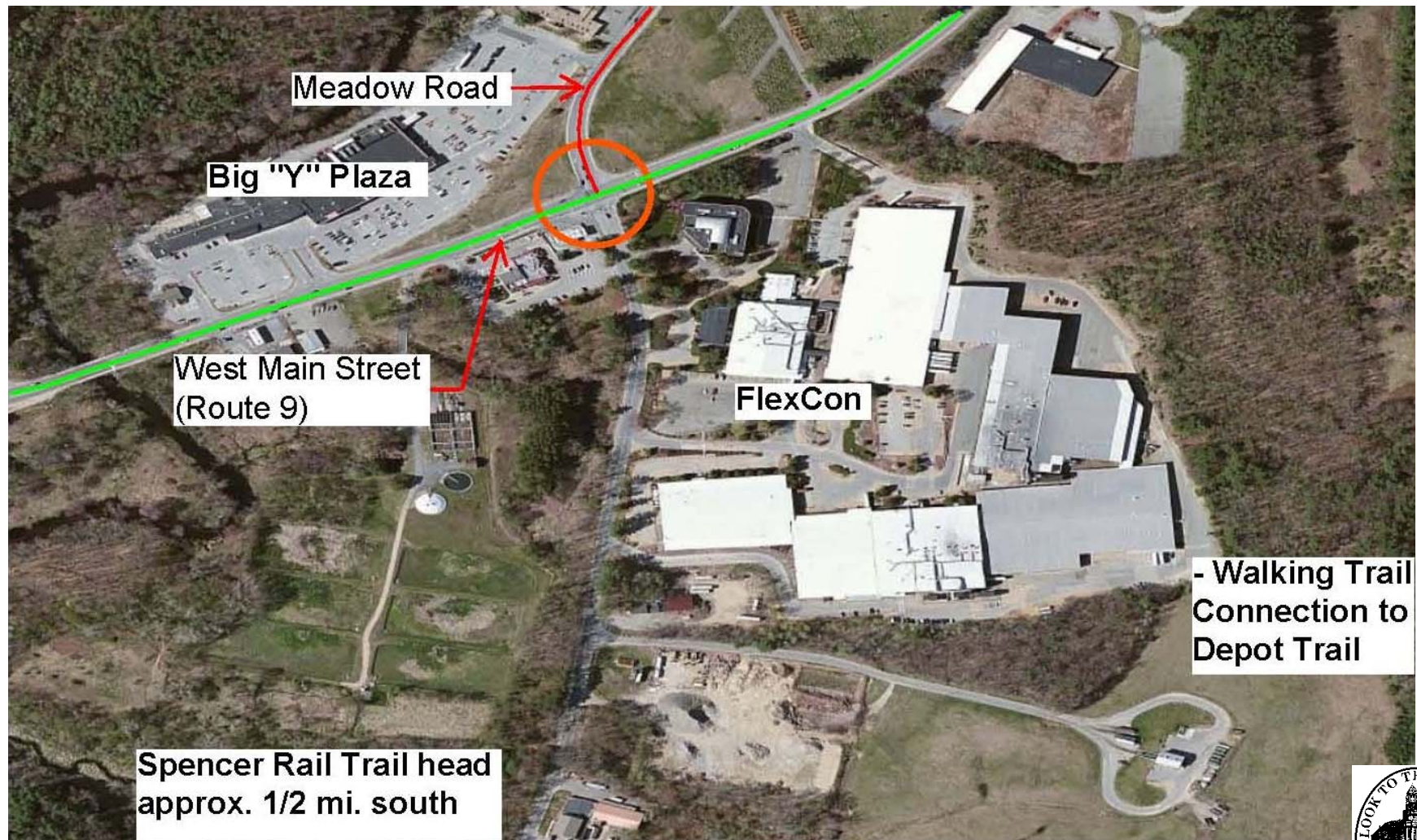
2017 01 22 Meadow Rd 007





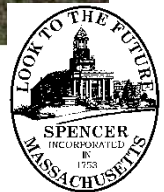
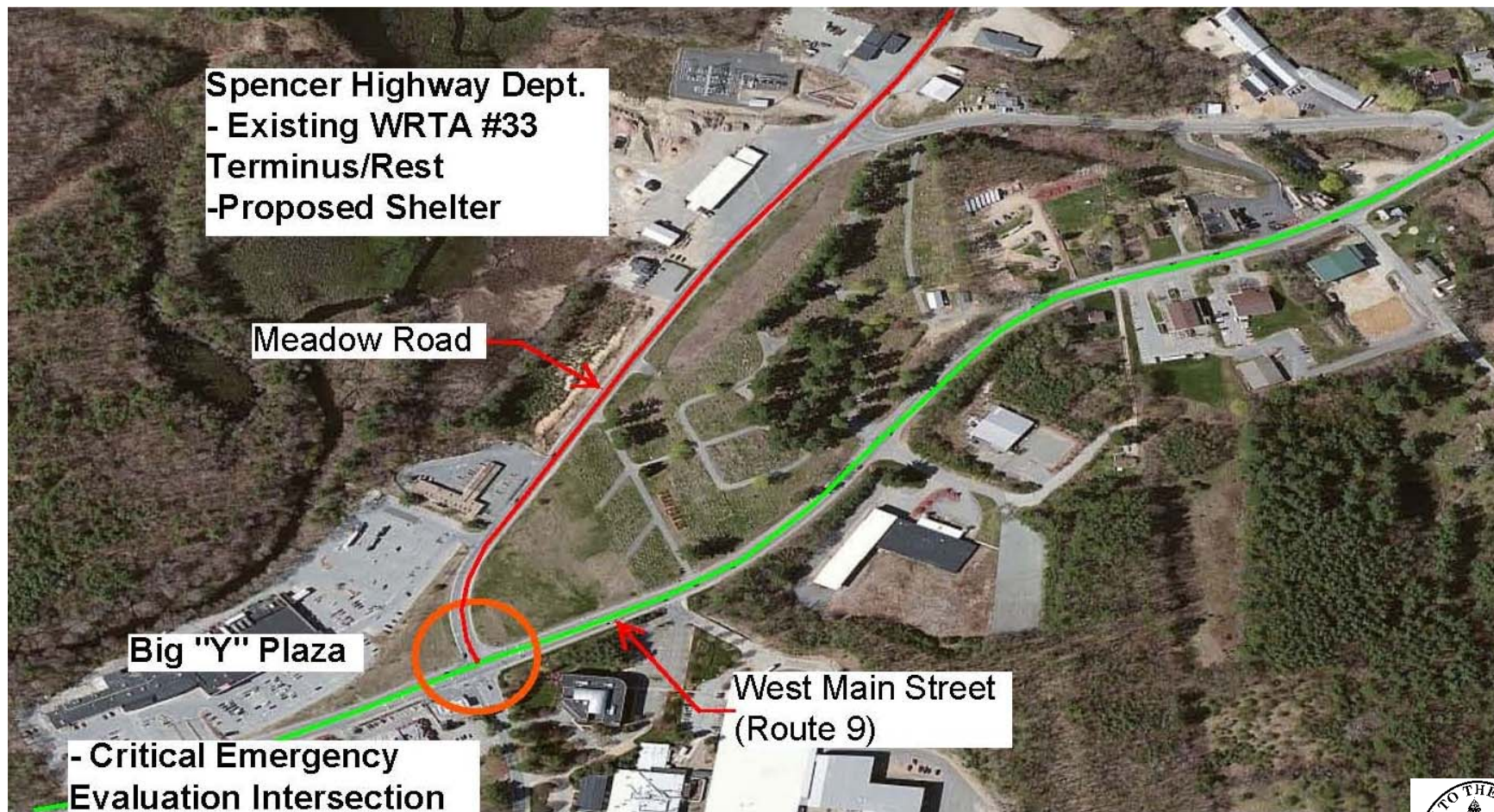
# Meadow Road Reconstruction & Intermodal Improvements

## Existing Context Aerial Photographs





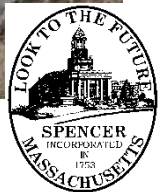
## Meadow Road Reconstruction & Intermodal Improvements Existing Context Aerial Photographs





# Meadow Road Reconstruction & Intermodal Improvements

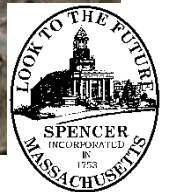
## Existing Context Aerial Photographs





# Meadow Road Reconstruction & Intermodal Improvements

## Existing Context Aerial Photographs





# Meadow Road Reconstruction & Intermodal Improvements

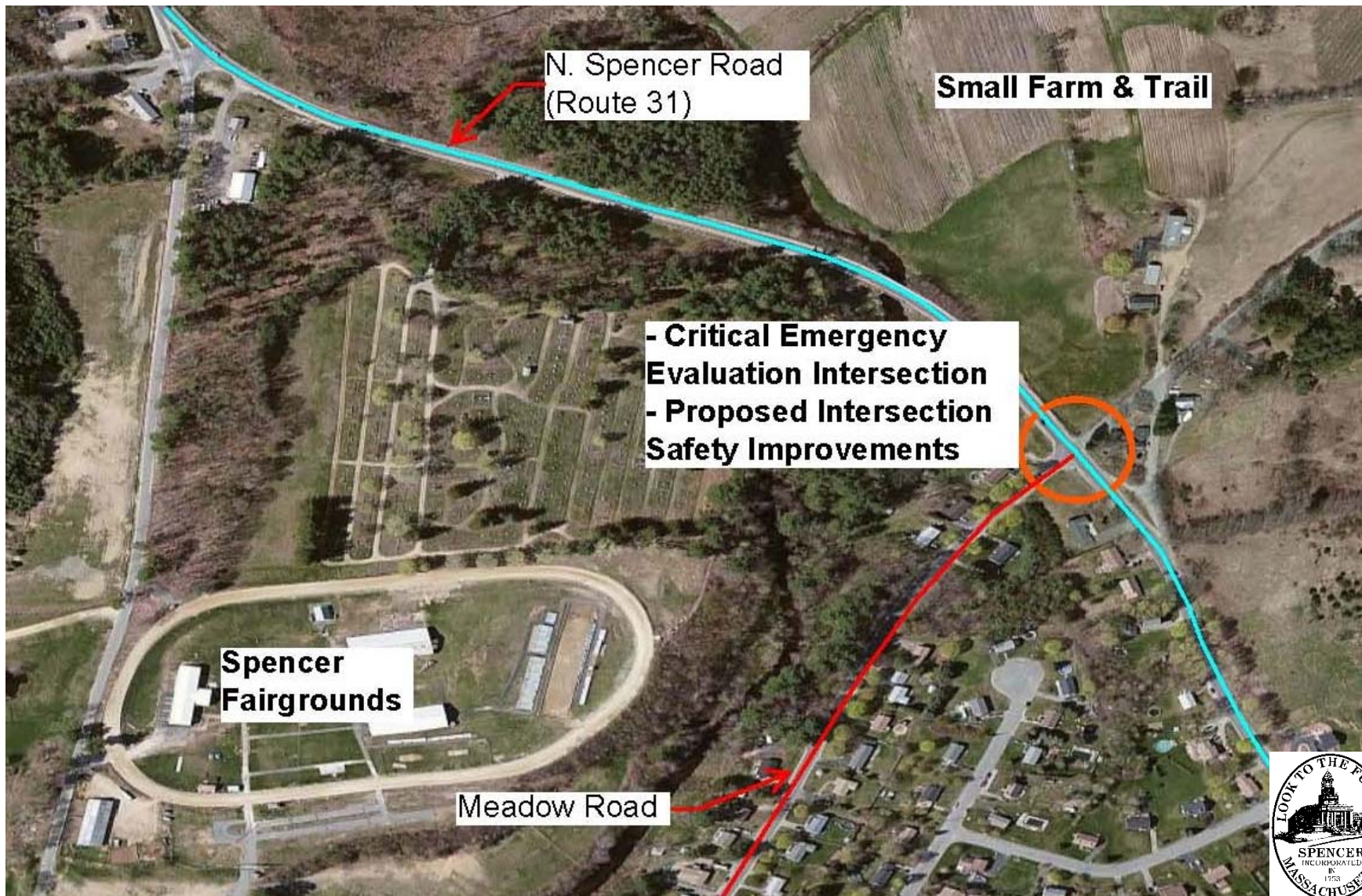
## Existing Context Aerial Photographs





# Meadow Road Reconstruction & Intermodal Improvements

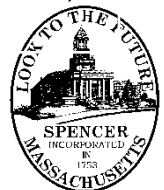
## Existing Context Aerial Photographs





# Meadow Road Reconstruction & Intermodal Improvements

CHARACTERISTIC	EXISTING	PROPOSED	Comments
Number of Travel Lanes	2	2	The proposed reconstruction will retain 2 lanes for vehicular travel and add bicycle, pedestrian and transit accommodations along the entire length of Meadow Rd.
Lane Width	11 feet	11 feet	Retain existing lane widths.
Shoulder Width	1-3 feet	5 feet min. both sides	Proposed shared shoulder for bicycle accommodations in each direction.
Existing Right of Way	60 feet	60 feet	ROW Varies – 60 feet or greater
Annual Daily Traffic (ADT)	5,825 VPD	5,825 VPD	Source - CMRPC 2014 Corridor Profile
Percent Truck Traffic	5%	5%	Estimated, CMRPC 2014 Corridor Profile
Traffic Control (signal, flash, signs, etc.)	Signal and stop signs	Signal and stop signs	Signalized at W. Main St (Route 9). High accident location at Pleasant St (Route 31). Fatality in past 5 years at Smithville Rd. Design will evaluate round-a-bout alternative at Pleasant St / N. Spencer Rd / Wire Village Rd.
Sidewalks	None Existing.	New Sidewalks.	New sidewalk proposed along entire east side of Meadow Rd. Sidewalks both sides proposed in commercial area near Route 9, Fairgrounds and Park.
Transit Routes & Facilities	WRTA #33 Stops at 7 Meadow Rd	Transit Improvements Proposed	The project will include a new transit stop with shelter near the southerly limits. Additional transit stops and shelters will also be included at key locations along Meadow Road.
Other Proposed Enhancements	Improvements include: flood resiliency; stormwater quality; EJ area connections; access to cultural, environmental and recreational resources; and protection of Zone II Aquifer Area.		





# Meadow Road Reconstruction & Intermodal Improvements

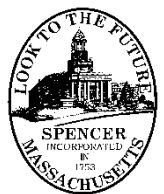
## Typical Commercial Area Cross Section





# Meadow Road Reconstruction & Intermodal Improvements

## Typical Rural Area Cross Section





# Meadow Road Reconstruction & Intermodal Improvements

## CENTRAL MASS REGIONAL PLANNING COMMISSION—MPO & AC

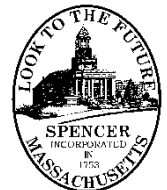
### T.I.P. PROJECT STATUS UPDATE

Date:		1/10/2018	
Project Number:	608873	Town/City:	SPENCER
		MDOT DISTRICT:	3
Project Name: Reconstruction of Meadow Road from W. Main St. (Route 9) to N. Spencer Road/Pleasant Street (Route 31) – 1.6 miles in total length			
STATUS	Design Level:	Prelim.	Engineers Estimate:
			\$6.5 mil.
	PRC Approved?	Yes/2017	TIP Schedule:
			TBD
Is the Project eligible for "HSIP"?		Yes	
Is the Project eligible for "CMAQ"?		Yes	
Has an RSA been held/scheduled:		Pending	
Does the Project comply with Healthy Transportation Policy?		Yes	

Project Overview: The existing roadway is in very poor condition, heavily cracked and numerous pot holes / patches. There are not any existing pedestrian or bicycle facilities. Stormwater quality, flood resiliency and related drainage improvements are also needed. The proposed reconstruction will be comprised of intermodal roadway enhancements including addition of new bicycle and sidewalk accommodations along the entire length of Meadow Road; MAAB/ADA accessibility; transit; and safety improvements. The proposed improvements are highly ranked in the Town's Complete Streets Prioritization Plan and will complete much needed connections to other proposed roadways sidewalk additions/improvements completing an important urban network of sidewalks within the urbanized area boundaries of Spencer. In addition the project will include flood resiliency and stormwater quality improvements. The Town's primary drinking water source and Zone II Aquifer Protection District is located along the westerly side on Meadow Road.

Regional Significance: Refer to 2/28/2017 PNF and 6/27/2017 PIF for further information. The project will address all of the above noted concerns as well as all recommendations set forth in the 2014 Route 31 Corridor Profile by CMRPC. Meadow Road links communities from south and west regions to communities in north and east regions, and provides direct access to the Town's commercial and retail facilities on Route 9. Meadow Road services high commercial volumes including E. Brookfield/Spencer railroad facility. Each end of project has been identified as a critical evacuation control intersection in the regional emergency preparedness plan by CMRPC. Meadow Road is serviced by WRTA Route 33. Meadow Road is the primary access to the Spencer Fairgrounds. This project will greatly enhance access to public transit and other intermodal services, tourism and other recreational and commercial connections. The project will promote "Smart Growth" within Spencer's urban center.

What Permits and/or ROW are anticipated:	Permitting will include local Conservation Commission (MGL Ch. 131) and MDFW/NHESP review. In addition, a MEPA ENF filing may be required due to the widening for shoulders and new sidewalks, and/or 5 or more trees being removed.
Are there EJ Concerns	No.
Are there ED Benefits:	Yes. EJ areas in close proximity to or within the project area will benefit from the improved access to transit, commercial, retail and environmental resources offered by this project.
Can the Project be PHASED:	Yes, the project can be phased. However, the entire roadway segment is in such poor condition that it all needs to be reconstructed in the near future.
What is Next in the Schedule:	25% Design Submission will occur in 2018





**Meadow Road Project**

**Proposed Improvements**

**Town of Spencer, Massachusetts**

**Legend**

- Project Meadow Road
- Proposed Sidewalk
- Hiking/Snowmobile
- Depot Rail Trail
- Existing Sidewalk
- Property Parcel

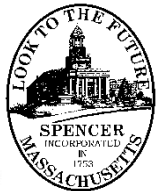
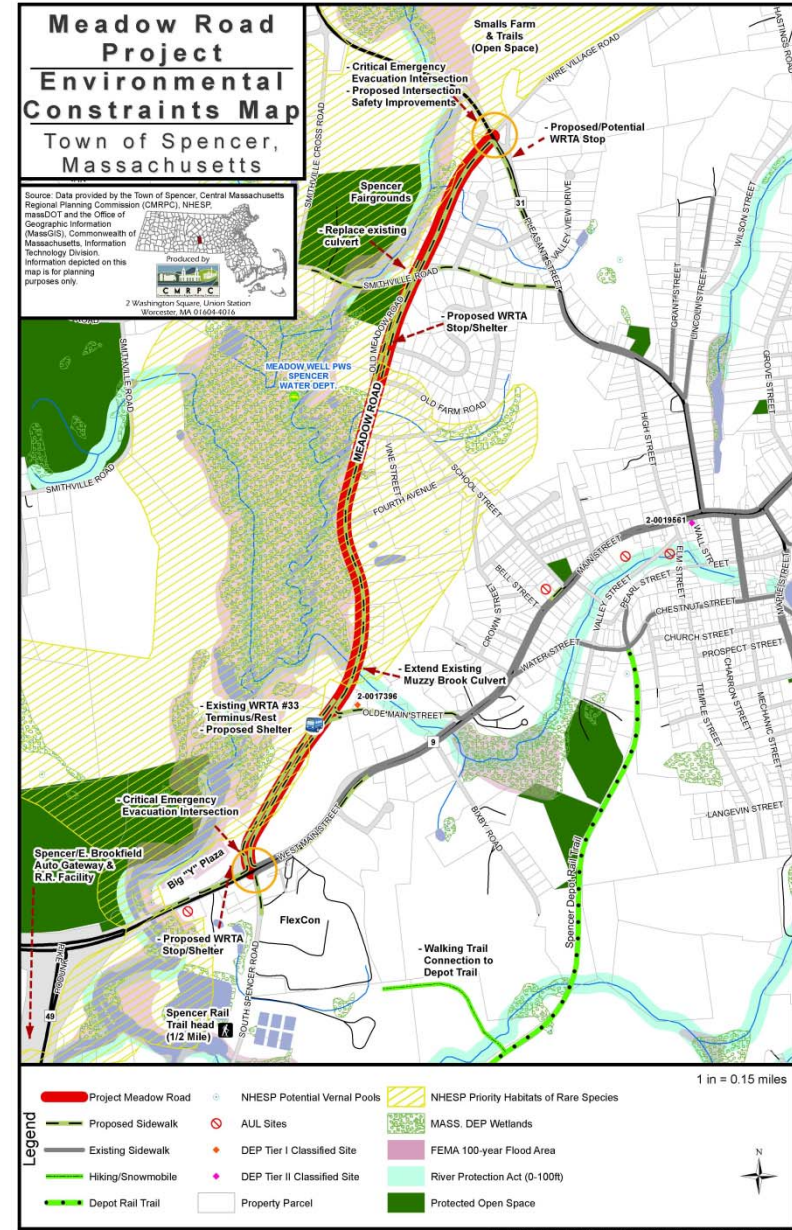
**Source:** Data provided by the Town of Spencer, Central Massachusetts Regional Planning Commission (CMRPC), NHESP, MassDOT and the Office of Geographic Information (MassGIS), Commonwealth of Massachusetts, Information Technology Division. Information depicted on this map is for planning purposes only.

**1 in = 0.15 miles**

**Produced by:**

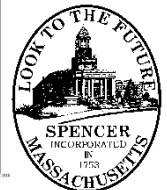
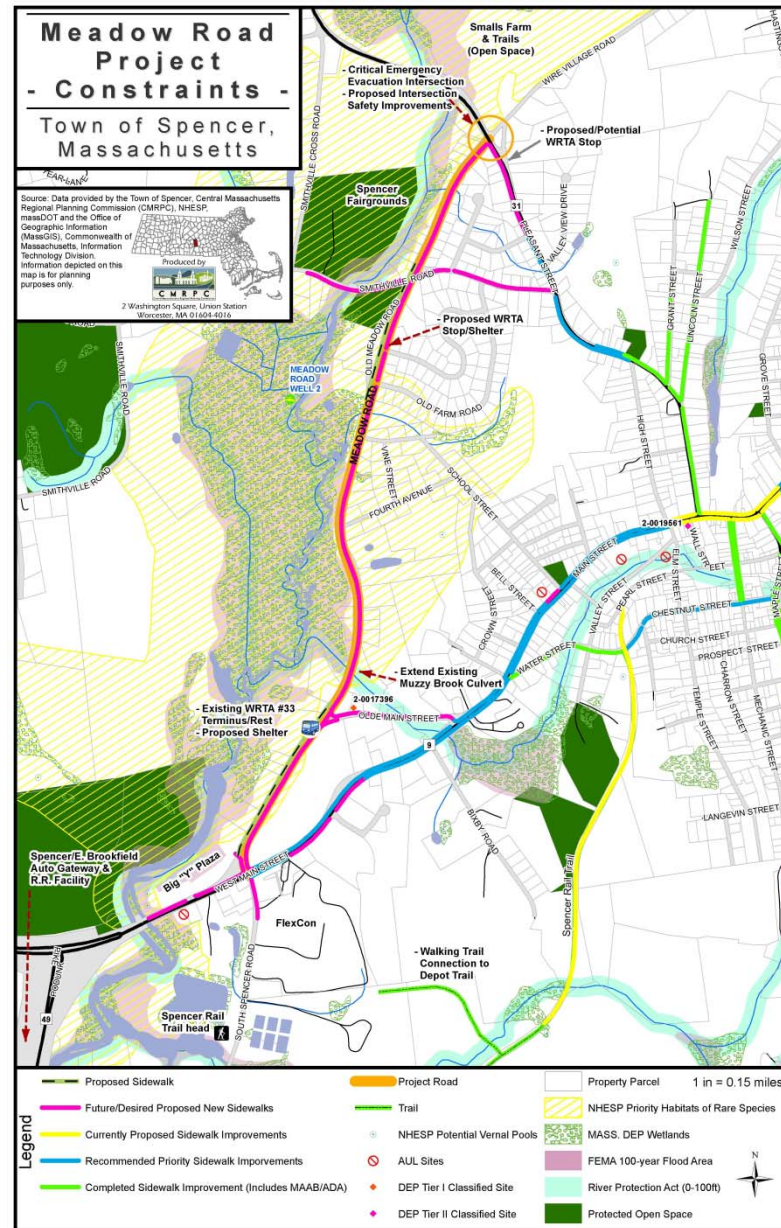
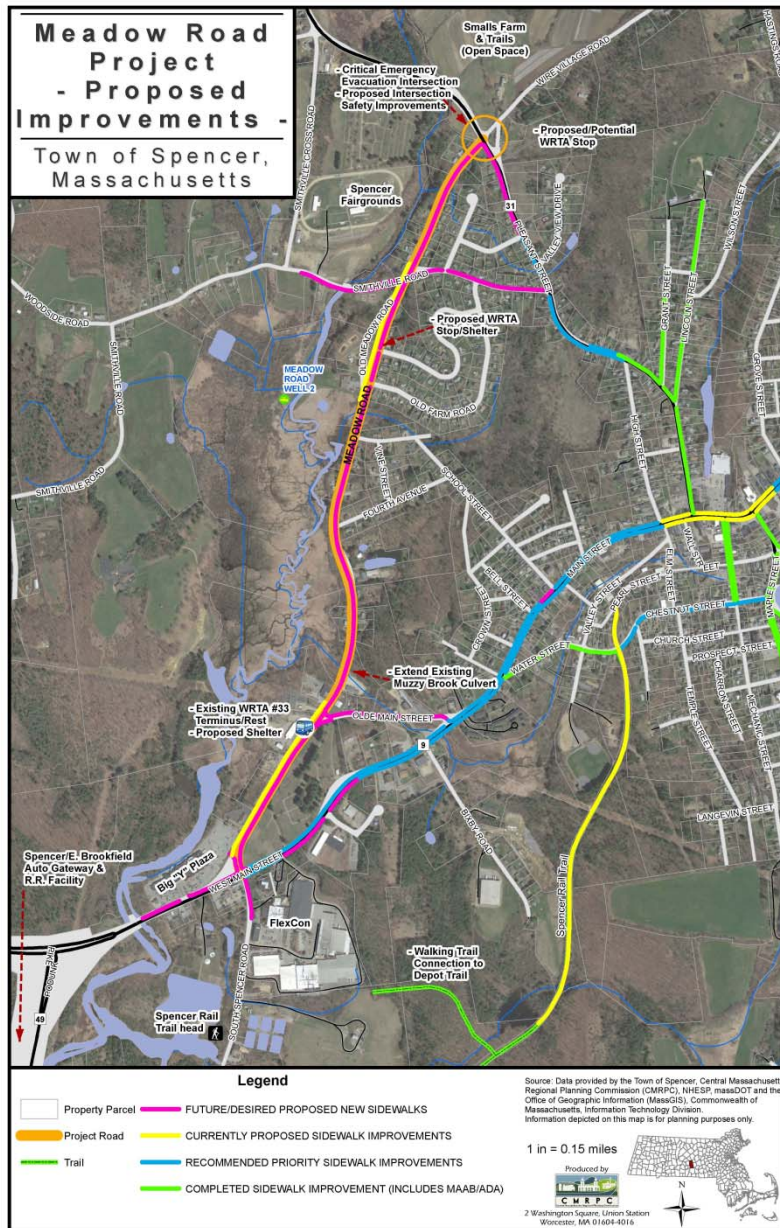
**CMRPC**

**2 Washington Square, Union Station**  
Worcester, MA 01604-5014





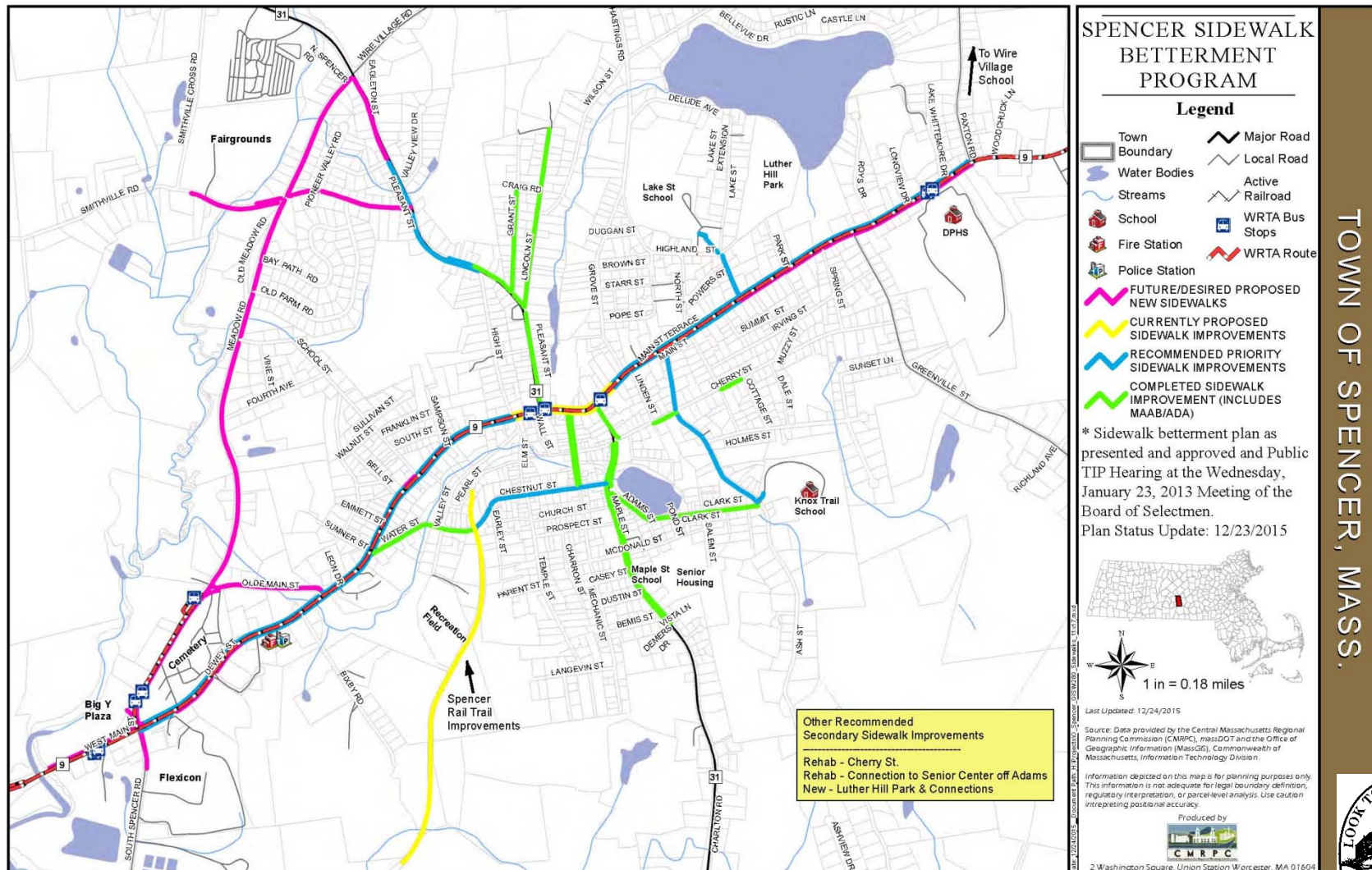
# Meadow Road Reconstruction & Intermodal Improvements





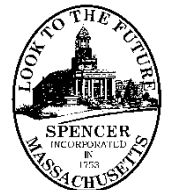
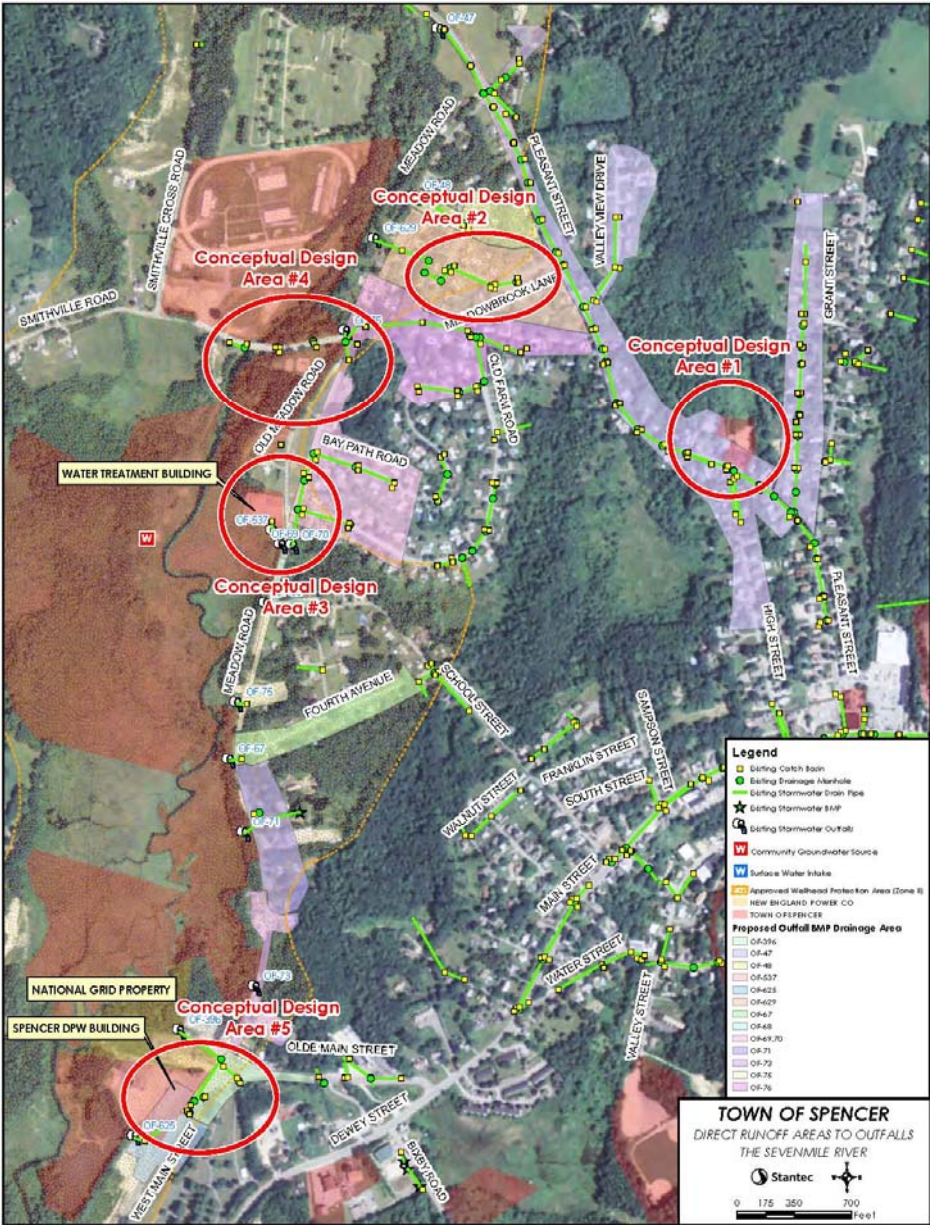
# Meadow Road Reconstruction & Intermodal Improvements

## Spencer Complete Streets & Proposed Pedestrian Betterments





## Meadow Road Reconstruction & Stormwater Improvements





# Meadow Road Reconstruction & Intermodal Enhancements

**Thank You !  
Questions ?**

