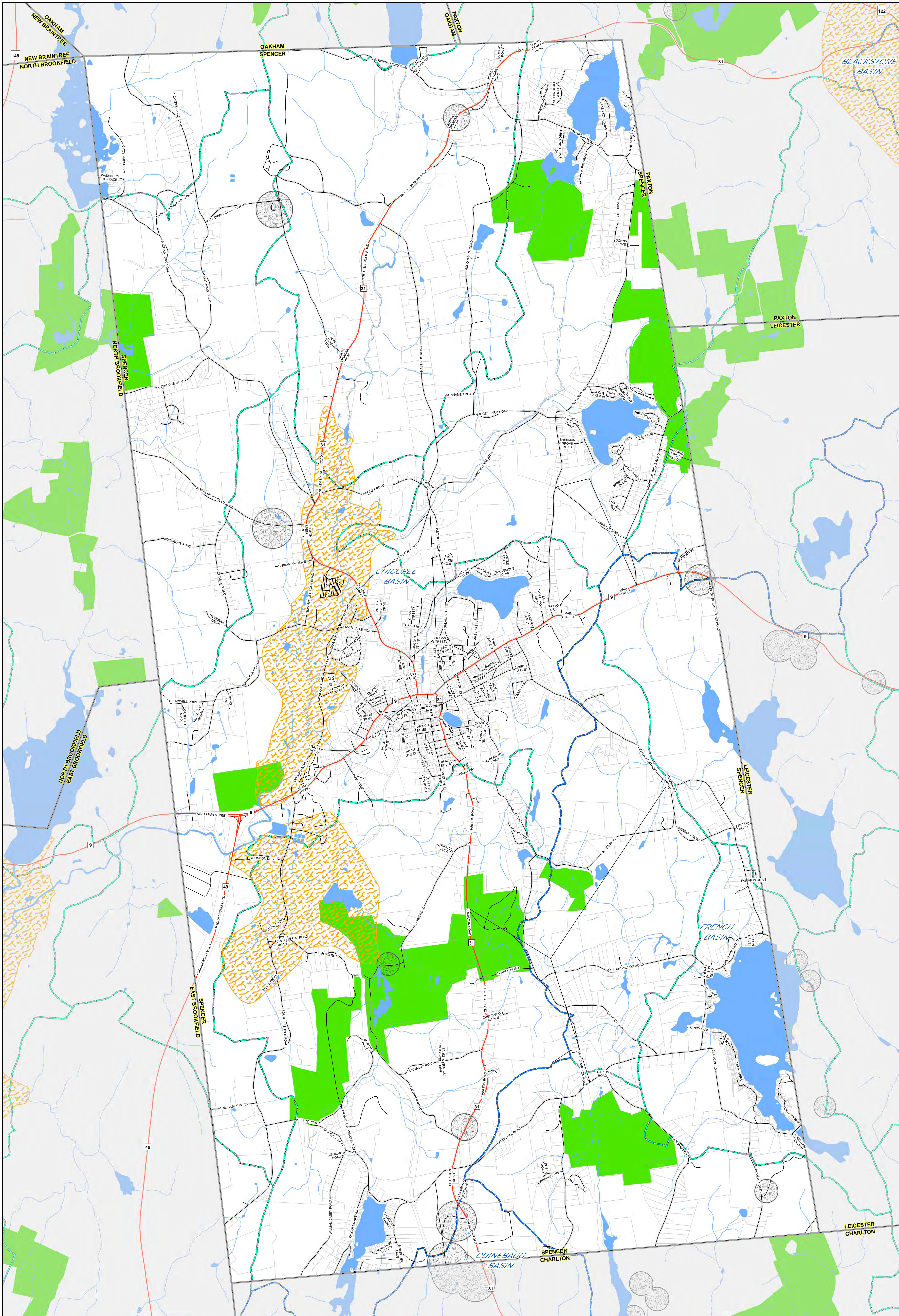


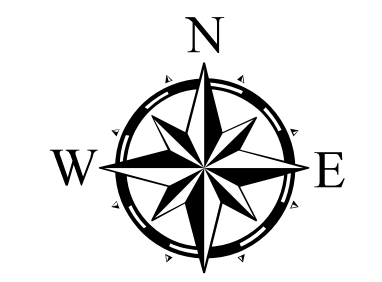
WATER
RESOURCE
PROTECTION
MAP
SPENCER, MASSACHUSETTS

TOWN OF SPENCER UTILITIES AND FACILITIES OFFICE



Legend

- TOWN BOUNDARIES
- ROADS (2011 MASSDOT RIF)
- STATE ROUTE
- LOCAL ROAD
- PROPERTY PARCELS
- WATER BODIES
- STREAMS
- INTERIM WELLHEAD PROTECTION AREAS
- APPROVED WELLHEAD PROTECTION AREAS
- MAJOR DRAINAGE BASINS
- DRAINAGE SUB-BASINS
- OPEN SPACE (AS OF SEPT. 2012)
- STATE OWNED



1 INCH = 1,200 FEET

INFORMATION DEPICTED ON THIS MAP IS FOR PLANNING PURPOSES ONLY. THIS INFORMATION IS NOT ACCURATE FOR LEGAL BOUNDARY DEFINITION, REGULATORY INTERPRETATION, OR PARCEL-LEVEL ANALYSIS. USE CAUTION INTERPRETING POSITIONAL ACCURACY.

SOURCE DATA PROVIDED BY THE CENTRAL MASSACHUSETTS REGIONAL PLANNING COMMISSION (CMRPC), MASSDOT OFFICE OF TRANSPORTATION PLANNING, GEOSPATIAL RESOURCE SECTION, AND THE OFFICE OF GEOGRAPHIC INFORMATION (MAGIS), COMMONWEALTH OF MASSACHUSETTS, INFORMATION TECHNOLOGY DIVISION.

